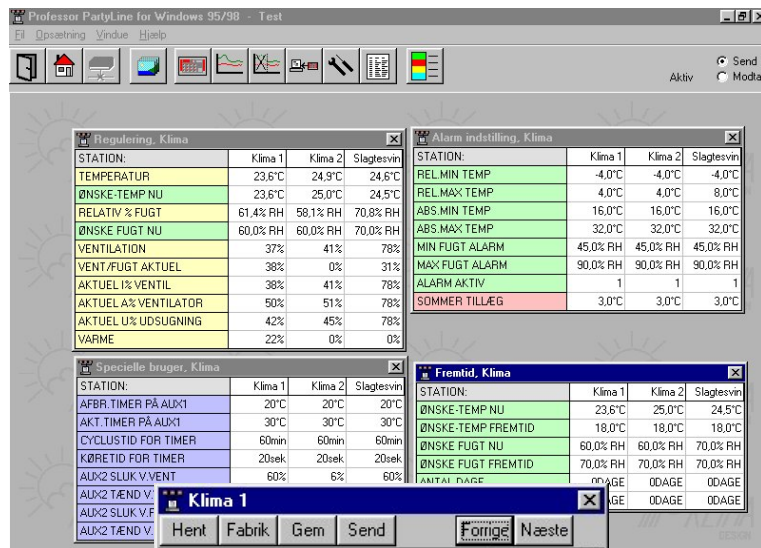


# Professor Partyline

Communication and presentation software for Windows®



## A superb overview !

Data from all connected units are presented in rows and columns, making it easy to overlook a complete installation. Settings can be compared and new values uploads as soon as you write them in the same fields. Every value correspond to the actual value at the unit.

## Trouble shooting and service

Settings can be compared to the a set of user or factory settings. Only differences are shown. You can correct mismatches with one mouse click. Or present values may be saved for later use.

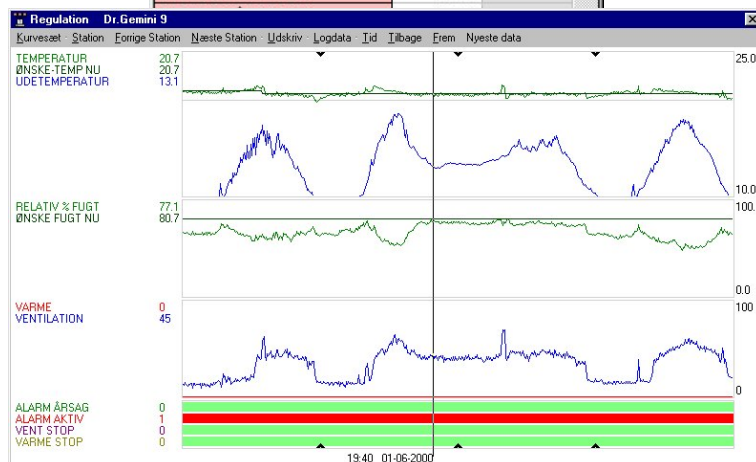
If a unit is replaced, you may upload user settings the same way.

## Easy setup

Connected units are scanned and configured automatically. More than one location is possible - including modem connection.

## Alarm logging

In case of alarm - and when parameters are set - changes are automatically time stamped and logged.



## Trend curves

Temperature and humidity are presented as curves together with ventilation/fan and heat supply. If a controller doesn't perform well it's easily detected. Temperature fluctuations becomes very visible.

Alarm status is shown as a horizontal colored bar making it easy to spot alarm situations. Other on/off registers may be shown this way, eg when heating is cut off.