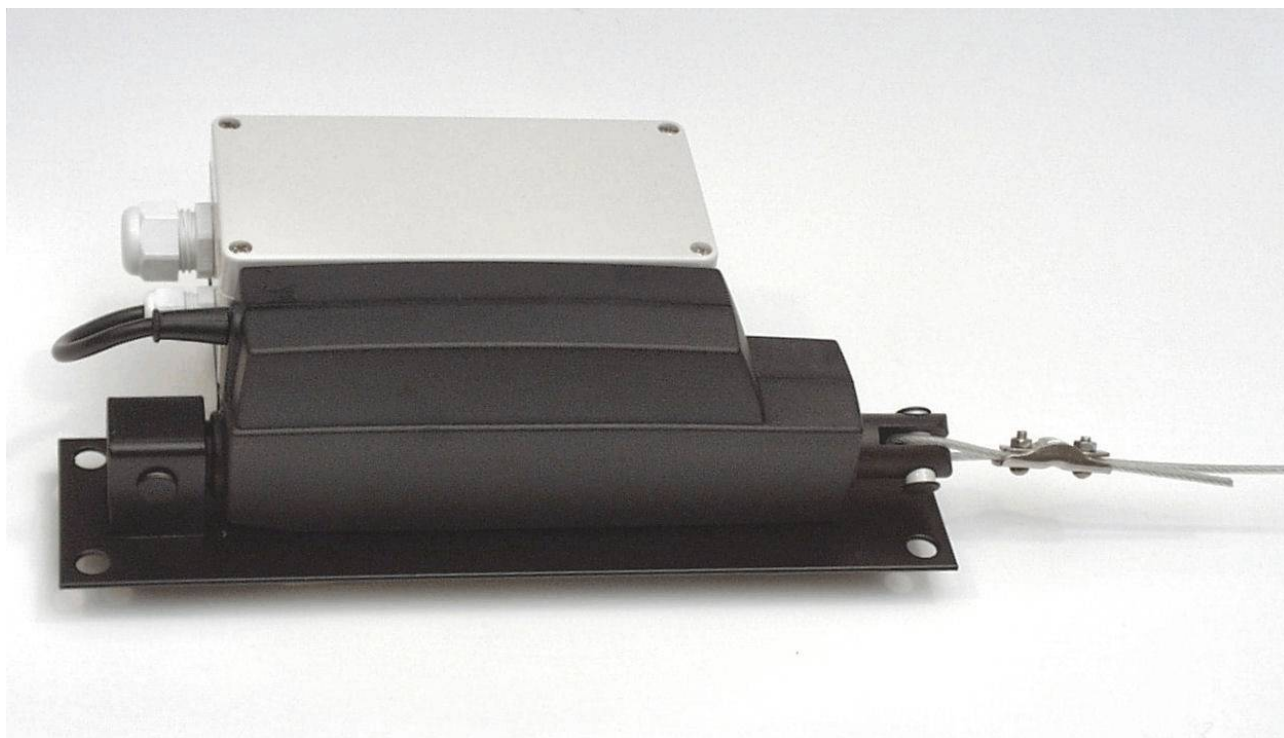


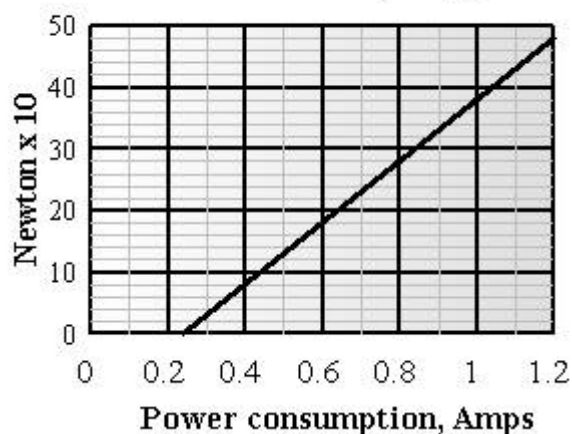
SM 59

ACTUATOR MOTOR WITH CONTROLLER UNIT



- Position controlled by 0-10V control signal and RS485 communication.
- Easy installation of wire for pulling dampers and inlet valves.
- Emergency opening by the lack of control signal. Control signal could be missing due to faulty cables, power-failure or faulty controller unit.
- Works on 12 VDC so its able to function during power-failure.
- Sealed according to IP65

Load max. 500N (50kg)



Adjustable length of travel	7-13 cm
Control signal	Working range: 1.5-9.5 V Emergency opening < 0.3 V OK >0.8V
Dimensions	87x140x290 mm

Time consumed by working from 0-100%

No load	Max. Load
¼ minute	1 minute